

2-6

VIGR
GWALIOR

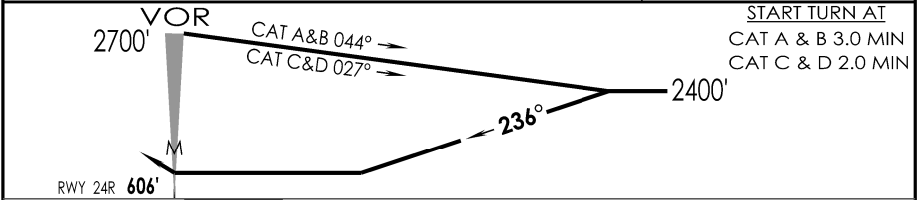
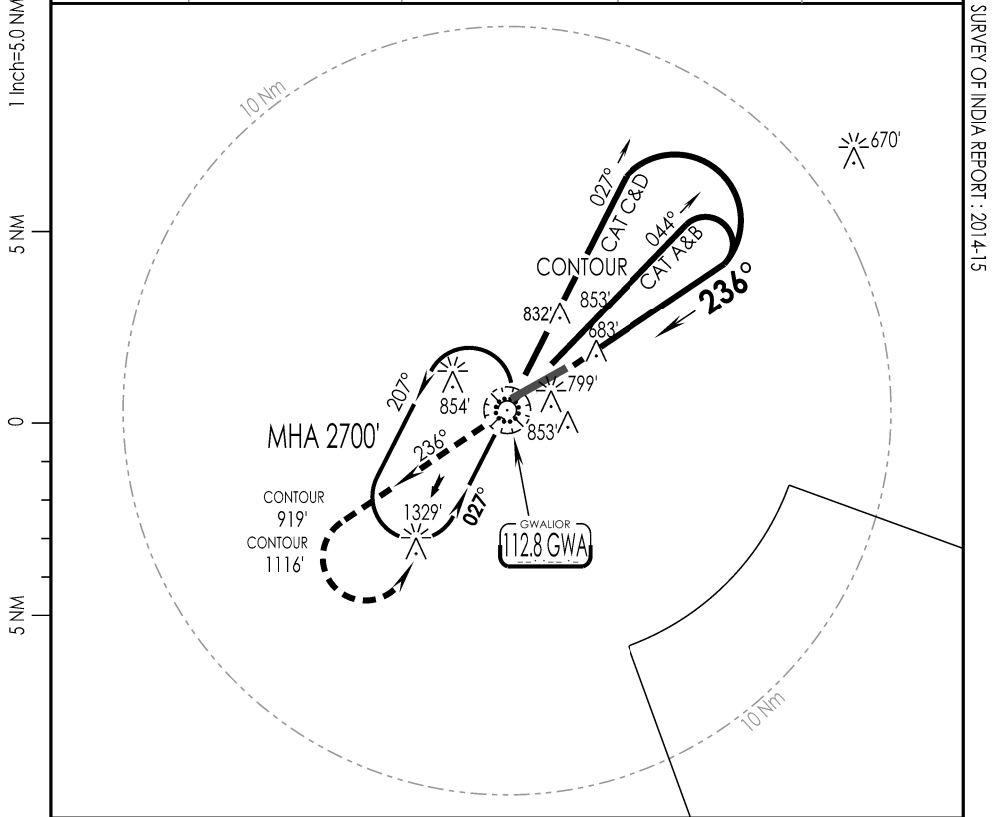
IAF
06 DEC 18

GWALIOR, INDIA
VOR Y RWY 24R

GWALIOR Approach 122.7 VC ,UC		GWALIOR Tower 122.7 VC	ATIS 112.8	<div style="border: 1px solid black; border-radius: 50%; width: 60px; height: 60px; display: flex; align-items: center; justify-content: center;"> 2700' </div> <p>MSA GWA VOR</p>
VOR GWA 112.8	FINAL Apch Crs 236°	MDA (H) 1100' (494')	Apt Elev 626' RWY 605	

MISSED APCH : Climb STRAIGHT AHEAD to 2700', then turn LEFT to join VOR hold or as directed by ATC.

Alt Set: hPa | Rwy Elev: 21 hPa | Trans level: By ATC | Trans alt: 4000'



MAP AT VOR		PAPI	↑ 2700'	↶
------------	--	------	---------	---

STRAIGHT - IN LANDING Rwy 24R		CIRCLE - TO - LAND		
non - CDFA				
MDA(H) 1100' (494')				
ALS OUT		MxKts	MDA (H)	VIS
A	RVR 2500m	100	1150' (531')	2800m
B		135		
C	RVR 2700m	180	1250' (631')	3200m
D		205		

LIGHTING : CAT II(24L),SALS(06R),STD OWL LIGHTING(24R/06L),PAPI(24L/06R)3.0°,PAPI(24R/06L)2.5°

CHANGES : Apt Elevation IPDC, DTE OF OPS (T & H)

SURVEY OF INDIA REPORT : 2014-15